

**KBF**  
**INTERIOR**  
**DESIGN**

THE BEAUTY OF SIMPLICITY

DESIGNS BY KYLE BROUGHTON-FREW

# ABOUT KBF

---

Having many happy memories of being born in South Africa, its indoor/outdoor way of living, large open properties, high ceilings and colonial architecture are something to be treasured. I didn't realise just how much until we moved to one of the worst council estates in Bolton in the late 90's. I believe this vast culture shock ignited a sensitivity within me to my surroundings.

It wasn't until my 20s that I discovered this would be such a huge advantage as an Interior Designer. I was lucky enough to be able to quit my job as an estate agent and dive headfirst back into the creative world, gaining a degree in Interior Architecture, whilst also taking on small interior design projects to feed my thirst for practical experience.

The day after I handed in my final project, I started filming the BBC/Netflix TV show "Interior Design Masters" which was one of the best experiences of my life, although a total baptism of fire. The show is still available on Netflix.

This willingness to constantly throw myself in at the deep end has shown me that our only limitation is our imagination, identifying problems and using creative thinking to solve these problems through design really does set me apart from others.









# TABLE OF CONTENTS

---



## 01/ BEACH HOUSE

The client wanted a cool, clean sophisticated beach feel.



## 02/ LUXURY BARN

The Client wanted a high country barn feel.





### 03/ COZY ORANGERY

The client wanted a cosy, super comfy interior avoid the typical showhome look.



### 04/ COUNTRY RETREAT

A relaxed and welcoming space making the most of mixing new and old.

# TABLE OF CONTENTS

---



## 05/ MID CENTURY

The client wanted a sophisticated mid century interior set to the backdrop of a gorgeous Edwardian Property



## 06/ PRINCIPLE SUITE

The classic wont a classic georgian style bedroom with a touch of modern glamour.





07/ FARMHOUSE KITCHEN  
The client wanted a fun and youth  
whymiscal farmhouse kitchen.



08/ JOINERY DESIGN  
Examples of our bespoke Joinery/  
Upholstery Pieces

01

BEACH HOUSE



## CALM AND CLEAN

The client want a sophisticated beach house with clean line and contemporary feel.



## BEAUTIFULLY SIMPLE

The architecture of the space was already stunning after the renovation so simple textures in wallpapers and soft furnishings were used to introduce the beach feel.



# WE LOVE TRICKY SPACES

## DESCRIPTION

The guest bathroom proposed a very interesting design challenge.

The staircase wall doubled as the wall to the shower, so we designed a bespoke dual-purpose glass screed and balustrade to ensure the stairs would be safe but also the spray would be kept well away from the stairs.

---

**MORE DETAILS AVAILABLE AT:**  
[kylebroughton-frew.squarespace.com](http://kylebroughton-frew.squarespace.com)







## BUDGETING

This was a holiday home so the main spend was allocated to the living spaces so limited the beach-linked feels where we could with textured ARTE wallpaper.

## DETAILS ARE CRUCIAL

All surfaces were sampled and compared to ensure that the warm textured, slightly sun-bleached feel was transferred to all aspects of the design.

02

LUXURY BARN



## HOME OFFICE

The client wanted bespoke pieces so we designed this curved desk for their home office with mirror effect cabinet to create a floating effect.



## ENTRANCE AND GUEST WC

They wanted wow factor in the entrance with a minimal colour palette. The bespoke joinery made the most of the double height space and bespoke stoneware in the WC create an ultra high end feel.



# MODERN BARN STYLE POOL HOUSE

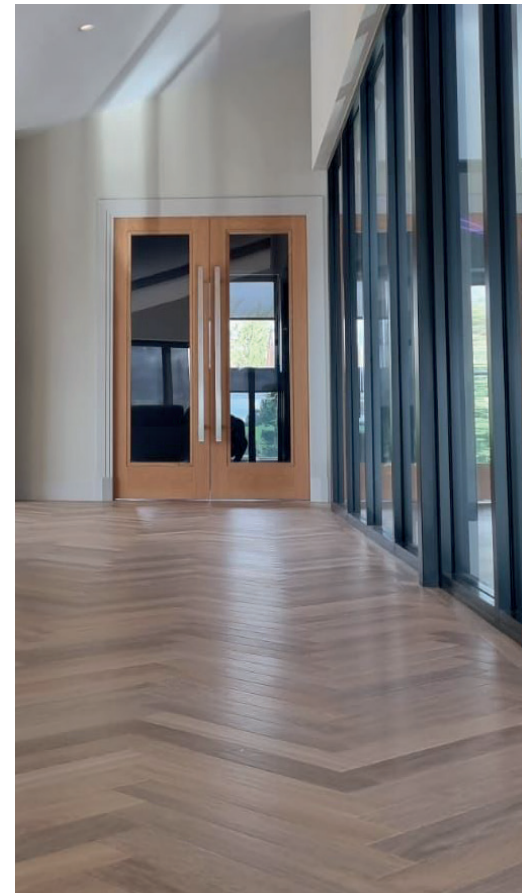
## DESCRIPTION

The client wanted a minimal spa feel with a warm feeling. The ceilings were low, so I designed recesses working around the steelwork to increase height.

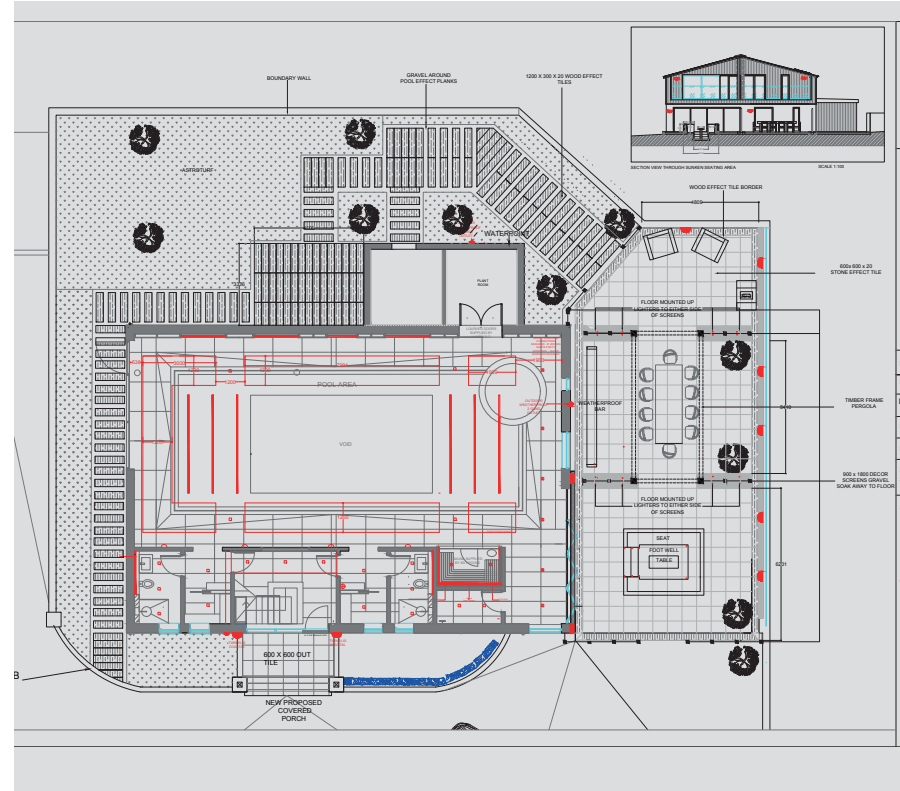
The staircase was a totally bespoke design by us and we had to work very closely with the main contractor to correct the issues created by previous trades.

---

**MORE DETAILS AVAILABLE AT:**  
[kylebroughton-frew.squarespace.com](http://kylebroughton-frew.squarespace.com)







## COHESIVE FEELING

I touched every part of this project and had the joy selecting all the external finishing .

## TECHNICAL DESIGNS

The devil is in the detail, I spent a lot of time getting the plans correct after taking of the project mid construction. It was so rewarding for us to see this come to life.





03

SUTTON COLDFIELD  
COZY ORANGERY

The client wanted a cosy, super comfy interior that would feel elegant but not too much like a typical show home.



# ANTIQUE PIECES ARE KEY

## DESCRIPTION

I used a scattering of antique/vintage pieces to help ground the space.

I always find that mixing new and old pieces really helps a space feel more grounded and lived in.

The whole energy of space can change with the introduction of a heritage space.

---

**MORE DETAILS AVAILABLE AT:**  
[kylebroughton-frew.squarespace.com](http://kylebroughton-frew.squarespace.com)





# 04 COUNTRY RETREAT

## DESCRIPTION

The client wanted a rustic country vibe for the spaces. The property was comprised of large rooms, so it was a major challenge to create cosy spaces within these large spaces.

I used a lot of antique and vintage pieces to make sure that the property has a rough lived in feel but still an easy-to-maintain tidy feel.

---

**MORE DETAILS AVAILABLE AT:**  
[kylebroughton-frew.squarespace.com](http://kylebroughton-frew.squarespace.com)





## HUNTING LODGE LOUNGE

This was a key example of our passion for helping our client fulfil their design goals.

The client loves taxidermy which is something we hadn't worked with before, but I had to learn to appreciate and understand them and ensure their treasured pieces felt celebrated.











## INDIVIDUAL SPACES WITH A COMMON LINK

### DESCRIPTION

The property was comprised of many different spaces.

Making it a really fun project, I was able to create multiple spaces all with their own identity but with a common throughline the property has a cohesive feel.

---

**MORE DETAILS AVAILABLE AT:**

[kylebroughton-frew.squarespace.com](http://kylebroughton-frew.squarespace.com)



# 05 MIDCENTURY DREAM

## DESCRIPTION

The client was expanding their gorgeous Edwardian family home.

They were adding a home office as they run a large advertising company to the rear of the property adjoining the kitchen.

They love mid-century design, so we got to dress the stunning architecture with bold minimal design.

I ended up dressing the rest of the property after having formed a great relationship with them.

---

**MORE DETAILS AVAILABLE AT:**

[kylebroughton-frew.squarespace.com](http://kylebroughton-frew.squarespace.com)





## FORM AND FUNCTION

The office space had to be clean and uncluttered allowing them to enjoy the space and work uninterrupted.

I am awaiting a revisit to re-photograph once the garden has been landscaped.











## BOLD BUT NOT BUSY

### DESCRIPTION

There is an amazing Edwardian Bay window flooded with light.

The client really didn't want colour of any kind so I worked with tones of white to focus on the architecture and carefully selected vintage pieces to bring through the mid-century vibe.

---

**MORE DETAILS AVAILABLE AT:**  
[kylebroughton-frew.squarespace.com](http://kylebroughton-frew.squarespace.com)



06

GEORGIAN ESTATE



## PRINCIPLE BEDROOM

The client wanted an effortlessly timeless principle bedroom to elevate and aid their busy lives.

## ENSUITE AND DRESSING ROOM

Simple details to elevate a space, I used the same stone tile in different formats to add detail and interest to the ensuite. This offset with the brass detail creates a luxurious feel.

The Dressing room was an awkward space so I worked closely with the manufacturer to maximise space.





# 07 FARMHOUSE KITCHEN

## DESCRIPTION

This client had a huge double-height kitchen living area. They wanted a fun youthful feel that could comfortably seat 8 people to eat and to sit in the living area.

They also have 3 dogs on the farm, so everything must be very durable but soft.

I used this large wallpaper mural to create a focal point in the vast space, the large, reclaimed wood table grounded the dining area, it's also super hardwearing so works perfectly with messy family dinners.

The colours were taken darker in the living area, and we mirrored the existing doors to open the narrow space in comparison to the overall space.

---

## MORE DETAILS AVAILABLE AT:

[kylebroughton-frew.squarespace.com](http://kylebroughton-frew.squarespace.com)







## A MOMENT WE LOVE

The client loved the way these Tom Dixon wall lights highlighted the birds on the mural wallpaper.





# 08

## JOINERY PIECES

### DESCRIPTION

Unique spaces require unique pieces.

The Bespoke design porch was made to celebrate the beautiful existing brick arch in this 1930s property.

The radiator cover doors were designed to mirror the Harlequin wallpaper on the ceiling to make the space feel cohesive.

The porch joinery was designed to mirror the proportions of the glazed partition in the Edwardian property.

I had the existing staircase repainted to bring out the gorgeous features.

---

**MORE DETAILS AVAILABLE AT:**

[kylebroughton-frew.squarespace.com](http://kylebroughton-frew.squarespace.com)





## HIGH END BOOTROOM

I designed glazed X design doors to the traditional Bootroom design to create a luxurious feel and open up a narrow hall.



## GUEST DRESSING ROOM

The client wanted a hotel vibe for their guest suite so we created a hotel-style storage area for guests so the rest of the joinery can be used for personal out-of-season items.



# 09

## DESIGN SKILLS & PROCESS

### SKILLS

I love designing in 3D as believe it allows you to develop and solve problems simultaneously. I work in AutoCAD and Sketchup together to help develop 3D models based on floorplans to help communicate the design to the client throughout all design stages.

Having to work virtually throughout COVID-19, I used the animation tools in SketchUp and Adobe Premiere to create a video walkthrough that can be used to help communicate things with ease when not in person.

It is a costly process, but I find it really helps clients feel comfortable with their spend.

---

### MORE DETAILS AVAILABLE AT:

[kylebroughton-frew.squarespace.com](http://kylebroughton-frew.squarespace.com)

### DESIGN PROCESS

#### 1. Detailed brief is taking

-Reference images are provided by client of fashion, building interior and exteriors, holiday destinations, restaurants. This is used to give us an idea of your style.

-Reasons for purchasing the property and why you like the local area. ( I will also research the local area)

-Survey of the space/spaces

#### 2. Floorplan and Elevations/Concept

-I will produce a 2D layout for the spaces along with elevations of the walls to give you a sense of layout and flow through the space. (Two Revisions are included as part of the fee.)

-A Digital Concept board supplied to establish the look and feel for the space.

#### 3. Mood Boards and Itemised Quote

Once approved a Digital Mood board and shopping list are created based on the approved layout and design concept.

You will be supplied with an itemised quote showing the elements of the design. (please note that the prices and items specified will only be guaranteed for 28 days from the date of quote.)

Once approved delivery are scheduled and installed in your new space.



THE BEAUTY OF SIMPLICITY

PORTFOLIO  
BROCHURE  
LAYOUT

---

+447766 082 594  
kyle@kbfdesign.co.uk  
www.kbfdesign.co.uk (public)  
<https://kylebroughton-frew.squarespace.com> (Online Resume)

KBF Interior Design  
9 Hardwick Road  
Sutton Coldfield  
West Midlands  
B74 3BT